

Turners Hill, Waltham Cross, EN8 8SA

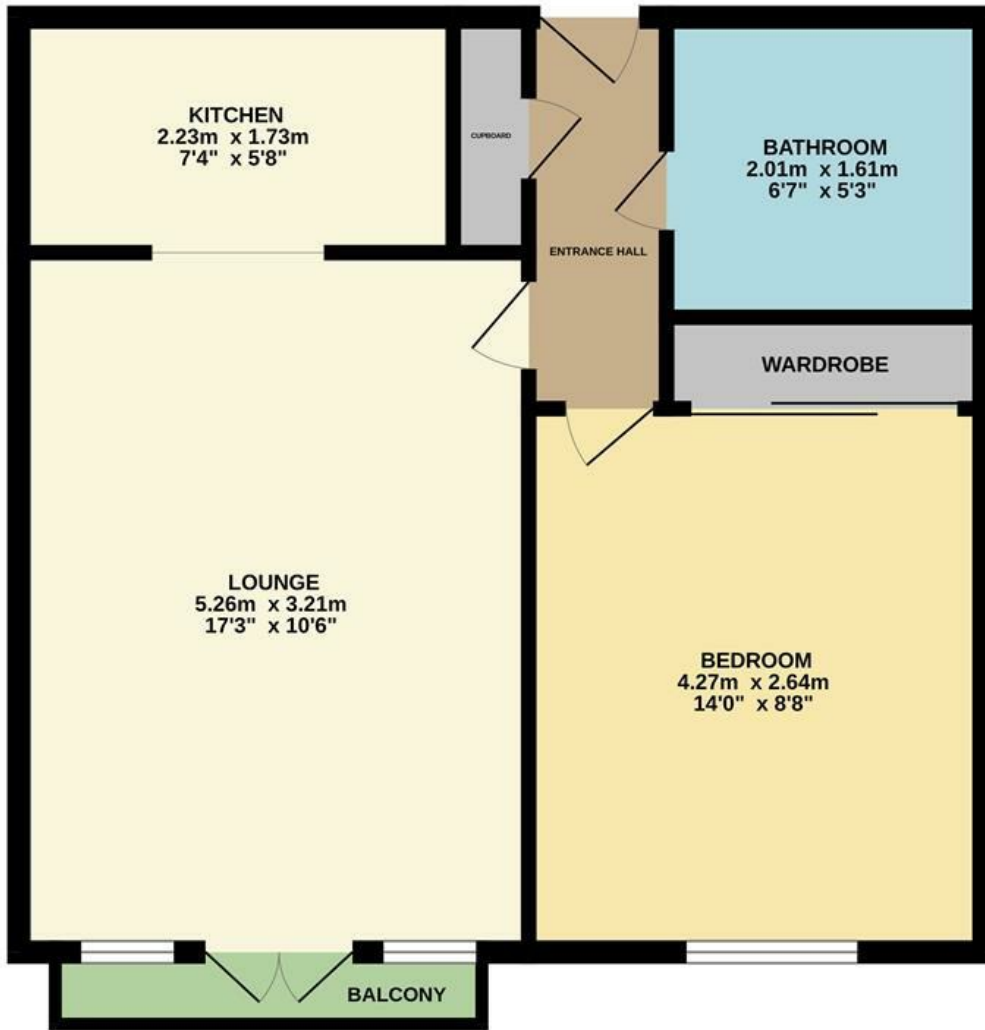


£145,000

Kings Group - Cheshunt are pleased to offer this beautifully presented FIRST FLOOR ONE BEDROOM RETIREMENT APARTMENT for the over 55's. The property is located in Central Cheshunt close to local shops at Cheshunt Old Pond and amenities including the Laura Trott Leisure Centre and Cheshunt Library and Cheshunt Community Hospital. The accommodation comprises lounge, fitted kitchen, double bedroom and spacious bathroom. There are the added benefits of a security entry phone system, communal gardens, residents lounge, on site development manager, access to laundry room, a guest room and 24 hour emergency call system. Edwards Court also benefits from having residents parking and direct access into the property with the added benefit of a small outside area directly in front of the property lounge offering your own private area to sit and relax. Internal viewing is recommended please contact us on 01992 635 735 to arrange an appointment,



GROUND FLOOR



Whilst every attempt has been made to ensure the accuracy of the floorplan contained here, measurements of doors, windows, rooms and any other items are approximate and no responsibility is taken for any error, omission or mis-statement. This plan is for illustrative purposes only and should be used as such by any prospective purchaser. The services, systems and appliances shown have not been tested and no guarantee as to their operability or efficiency can be given.
Made with Metropix ©2023

| Energy Efficiency Rating | | Current | Potential |
|---|-------------------------|---------|-----------|
| Very energy efficient - lower running costs | | | |
| (92 plus) A | | | |
| (81-91) B | | | |
| (69-80) C | | | |
| (55-68) D | | | |
| (39-54) E | | | |
| (21-38) F | | | |
| (1-20) G | | | |
| Not energy efficient - higher running costs | | | |
| England & Wales | EU Directive 2002/91/EC | | |

| Environmental Impact (CO ₂) Rating | | Current | Potential |
|---|-------------------------|---------|-----------|
| Very environmentally friendly - lower CO ₂ emissions | | | |
| (92 plus) A | | | |
| (81-91) B | | | |
| (69-80) C | | | |
| (55-68) D | | | |
| (39-54) E | | | |
| (21-38) F | | | |
| (1-20) G | | | |
| Not environmentally friendly - higher CO ₂ emissions | | | |
| England & Wales | EU Directive 2002/91/EC | | |

